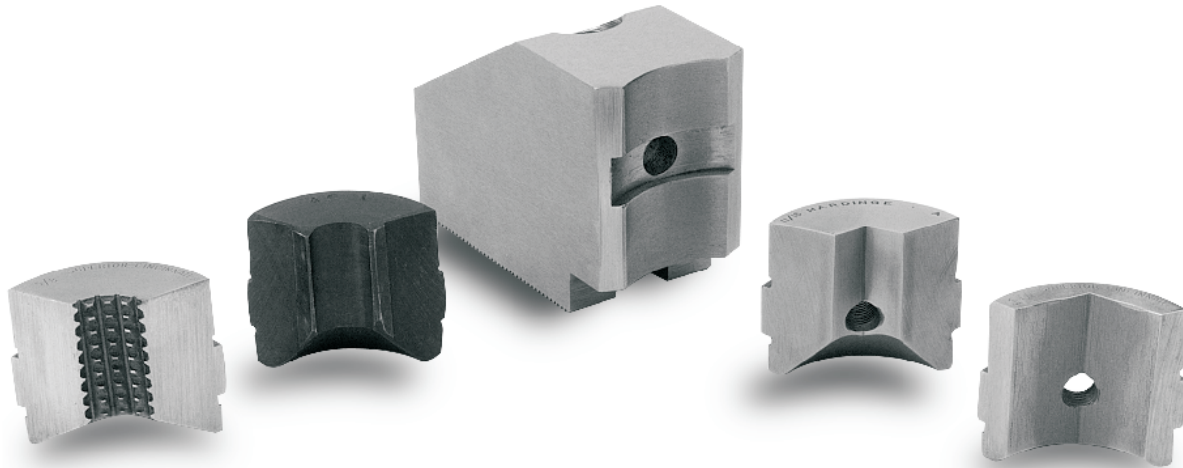


# COLLET PAD TOP JAW SYSTEM

**WE SELL  
CHUCKS!**  
CYLINDERS

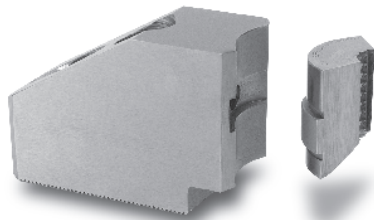


*We Keep The World Turning!*



## COLLET PAD JAWS

AVAILABLE IN STEEL OR SPECIAL



Collet pads are available in four harden and ground styles: round smooth, round serrated, hex smooth and square. Emergency blank soft collet pads are also available for machining just like soft jaws.

When delivery is critical, we supply soft collet pads immediately from stock

### TO ORDER:

Tell us your chuck model number, desired gripping style and work diameter.

WARNER & SWASEY OR BALAS	HARDINGE GISHOLT	JONE & LAMSON	COLLET	PAD CAPACITY (inches)	STOCK RANGE (inches)
461 Series # 3	3X Series 5835	10482 11232 11233	1027 1060 1080	Round 1-1/2 Hex 1-5/16 Square 1-1/16	1/2 - 1-1/2 1/2 - 1-5/16 1/2 - 1-1/16
_____	_____	11710 Round 11711 Square 11712 Hex	1081	Round 1-3/4 Hex 1-1/2 Square 1-1/4	1/2 - 1-3/4 1/2 - 1-1/2 1/2 - 1-1/4
1129 Series #4	4X Series 5839	19992 19994 19995	1025 1082 1061 1081	Round 2 Hex 1-3/4 Square 1-3/8	1/2 - 2 1/2 - 1-3/4 1/2 - 1-3/8
471 Series #5	5X Series 11X Series 5843	10482 10481 11232 11233	1026 1063 1083	Round 2-1/2 Hex 2-3/16 Square 1-3/4	1/2 - 2-1/2 1/2 - 2-3/16 1/2 - 1-3/4
4669 Series	_____	11710 11711 11712	1022 1084	Round 3 Hex 2-5/8 Square 2-1/8	1/2 - 3 1/2 - 2-5/8 1/2 - 2-1/8
_____	12X Series	19992 19994 19995	1066 1067 1085	Round 3-1/2 Hex 3 Square 2-7/16	1/2 - 3-1/2 1/2 - 3 1/2 - 2-7/16
2779 Series	13X Series	80754 80756 80757	1018 1023 1068	Round 4 Hex 3-7/8 Square 3-3/16	1/2 - 4 1/2 - 3-7/8 1/2 - 3-3/16

## BORING INSTRUCTIONS

1. Bolt collet pad top jaw to your chuck.
2. Position the pre-loading device between the jaws and hold the turning plate under pressure while you bore your jaws.
3. Bore approximately .030" off the I.D.
4. Deburr the bored area, remove the pre-loading device and bolt on your pads.

